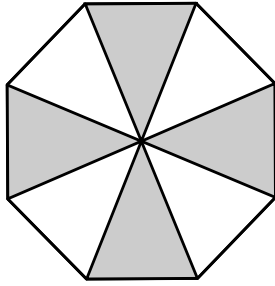


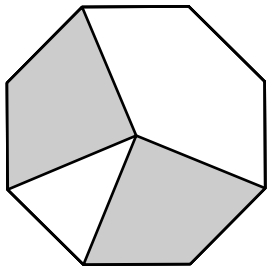
Mathematics, Grade 4

- 9 Jake is tossing a chip onto different targets. The chip has the best chance of landing on a SHADED space in which target?

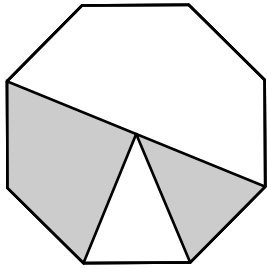
A.



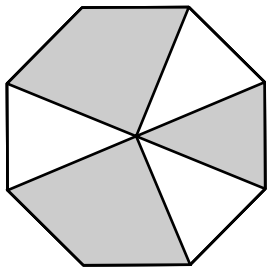
B.



C.



D.



Reporting Category for Item 9: *Data Analysis, Statistics, and Probability* (p. 220)

Session 1, Open-Response Question

Use the alphabet shown below to answer question 10.

A B C D E F G H I J K L M N O P Q R S T U V W X Y Z

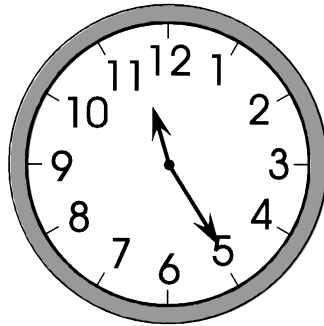
- 10** a. In your Student Answer Book, copy **THREE** letters above that have **ONLY ONE** line of symmetry. Draw a dotted line to show the line of symmetry for each letter.
- b. Copy **THREE** letters that are **NOT** symmetrical.
- c. Copy **ONE** letter that has at least **TWO** lines of symmetry. Draw dotted lines to show the lines of symmetry.

Reporting Category for Item 10: **Geometry** (p. 219)

Session 1, Short-Answer Questions

Use the clocks below to answer question 11.

Clock 1



Clock 2



- 11 Clock 1 shows the time Jamal left home in the morning. Clock 2 shows the time he arrived at his grandfather's house that afternoon. How long did it take him to make the trip?

Reporting Category for Item 11: *Measurement* (p. 220)

- 12 Write this decimal as a fraction.

$$0.4 = \underline{\hspace{2cm}}$$

Reporting Category for Item 12: *Number Sense and Operations* (p. 217)